



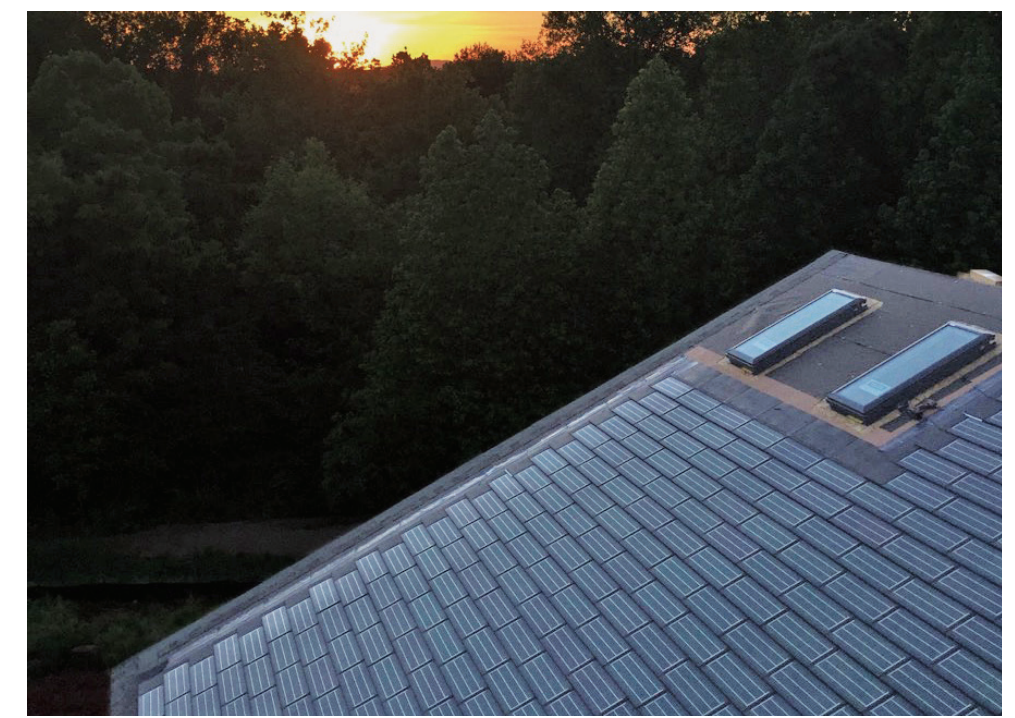
Addison Homes

The Emery | Greer, SC | Addison-Homes.com



Photos courtesy of Addison Homes

“The DOE Zero Energy Ready Home program has set a standard that is truly ‘best in class’ and is pulling our industry towards a quality revolution.”
Todd Usher, builder, Addison Homes



PROJECT DATA

- **Layout:** 3 bdrm, 2 bath, 1 fl + bsmt, 4,551 ft²
- **Climate:** IECC 3A, mixed-humid
- **Completed:** September 2015
- **Category:** custom for buyer

MODELED PERFORMANCE DATA

- **HERS Index:** without PV 43, with PV 21
- **Projected Annual Energy Costs:** without PV \$1,828, with PV \$855
- **Projected Annual Energy Cost Savings:** (vs home built to 2009 IECC) without PV \$1,439, with PV \$2,412
- **Annual Energy Savings:** without PV 13,830 kWh, 81 therms; with PV 23,555 kWh, 81 therms

CONTACT

Todd Usher
todd@addison-homes.com
864-848-2667

KEY FEATURES

- **Walls:** 2x6 24" o.c. advanced framed with insulated headers and 2-stud corners, R-13 unfaced fiberglass batt, OSB, 1" R-5 taped, R-18 total. Vinyl siding.
- **Roof:** Asphalt and PV shingles, ice-and-water shield in valleys and low roofs; kick-out flashing, synthetic felt, drip edge flashing, vent gaskets, tape flashing.
- **Attic:** R-38 blown fiberglass. All penetrations and top plates sealed. Skylight shafts have R-10 XPS foam and R-19 unfaced fiberglass batts.
- **Foundation:** Daylight basement of precast concrete walls with R-16 XPS foam, R-5 XPS under slab perimeter. Daylight wall has R-5 XPS.
- **Windows:** Double-pane low-e, U=0.30, SHGC=0.26. Solar tubes, venting skylights.
- **Air Sealing:** 1.51 ACH 50.
- **HVAC:** Central heat pump 21.5 SEER, 10 HSPF, ducts inside. Insulated rigid trunk and flex branch. Return registers in every room, balancing dampers on every run.
- **Hot Water:** Tankless gas water heater, 0.97 EF, with smart controller.
- **Lighting:** 95% LED, 5% CFL, skylights, sun tubes, and roof windows.
- **Appliances:** ENERGY STAR clothes washer, refrigerator, dishwasher, ceiling fans, exhaust fans.
- **Solar:** 7.625-kW solar shingles, grid tied.
- **Water Conservation:** Low-flow fixtures and toilets. WaterSense irrigation controller.
- **Energy Management System:** Smart HVAC, solar PV monitoring system.
- **Other:** No-/low-VOC paints, adhesives; GREENGUARD-certified hardwood flooring, carpet, pad; non-toxic pest control, KCMA ESP-labeled cabinets, no added formaldehyde insulation. Laminated beams, I-joint floors, Finger-jointed trim and cabinets. Universal design.

